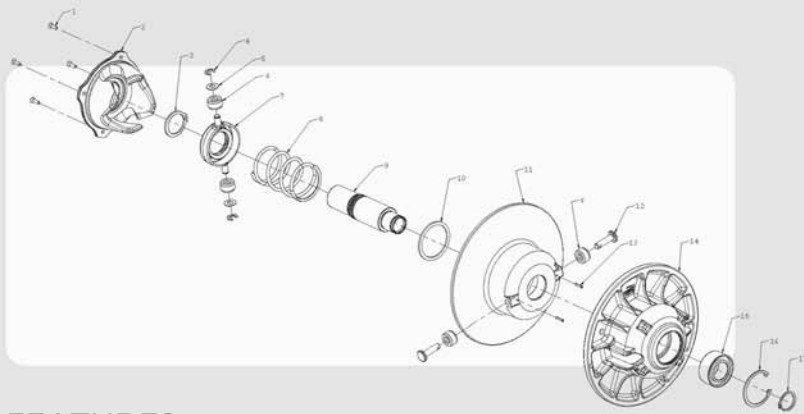


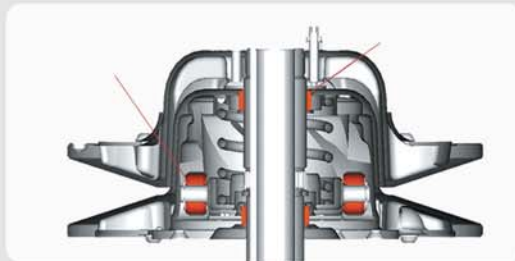
◀ POLARIS SPECIAL CLUTCH ▶

By separating the moveable alignment function from the moveable activation function, TEAM has produced a secondary clutch that eliminates binding. Close tolerance machining and properly selected materials mean cooler, more efficient operation. Tighter clearances yield longer life.

TEAM Rapid Reaction clutches out-perform all others. That's why this unique technology has been successful in snowmobile racing and performance markets for years, and we're pleased to offer it for your ATV.



FEATURES



- Twin rollers in enclosed helix tracks.
- Smooth up-shift and back-shift.
- Consistent operating RPM.
- Improved efficiency, performance, durability.
- Forged steel spider.
- Durable polymer rollers.
- Machined helix profiles.

BENEFITS

- Minimized binding: the spider is fixed to the post by splines and floats to self-align with helix surface.
- Smoother shifting to cushion impacts.
- No heavy torsion spring, allowing easy change of the helix.
- Equal load-sharing.
- The two movable bushings are rigidly supported to prevent binding: optimal length-to-diameter ratio.
- Rollers and bushings are protected from soil and moisture.

◀ HELIX ▶

The ATV Helix produces a quick up-shift and improved back-shift for excellent throttle response. The dual-angle option helix offers fine-tuning for changing conditions. These unique components are available in a variety of multi-angles for almost any application. Standard and electric-reverse models.



| | Year | Clutch | Helix | Spring |
|----------------|-------|------------|------------|------------|
| TAS-03 | | | | |
| Magnum 500 EBS | 99 | RCVT420932 | RCVT420582 | RCVT210169 |
| Sportsman 500 | 98-05 | RCVT420932 | RCVT420582 | RCVT210169 |
| Sportsman 600 | 03-05 | RCVT420932 | RCVT420599 | RCVT210215 |
| Sportsman 700 | 02-05 | RCVT420932 | RCVT420599 | RCVT210215 |
| Sportsman 800 | 05 | RCVT420932 | - | - |

| | Year | Clutch | Helix | Spring |
|----------------------|-------|------------|------------|------------|
| TSS-03 X | | | | |
| Ranger II 2x4 | 02-05 | RCVT930709 | RCVT420576 | RCVT210038 |
| Ranger II 4x4 | 02-05 | RCVT930709 | RCVT420576 | RCVT210038 |
| Ranger II 6x6 | 02-05 | RCVT930709 | RCVT420576 | RCVT210038 |
| 400 Liquid 2 strokes | All | RCVT930709 | RCVT420594 | RCVT210038 |
| Trailblazer 400 | 03-05 | RCVT930709 | RCVT420594 | RCVT210038 |
| Scrambler 400 | 94-02 | RCVT930709 | RCVT420594 | RCVT210038 |
| Scrambler 500 | 98-05 | RCVT930709 | RCVT420582 | RCVT210190 |

◀ SECONDARY SPRINGS ▶

Secondary springs control shift rate.

